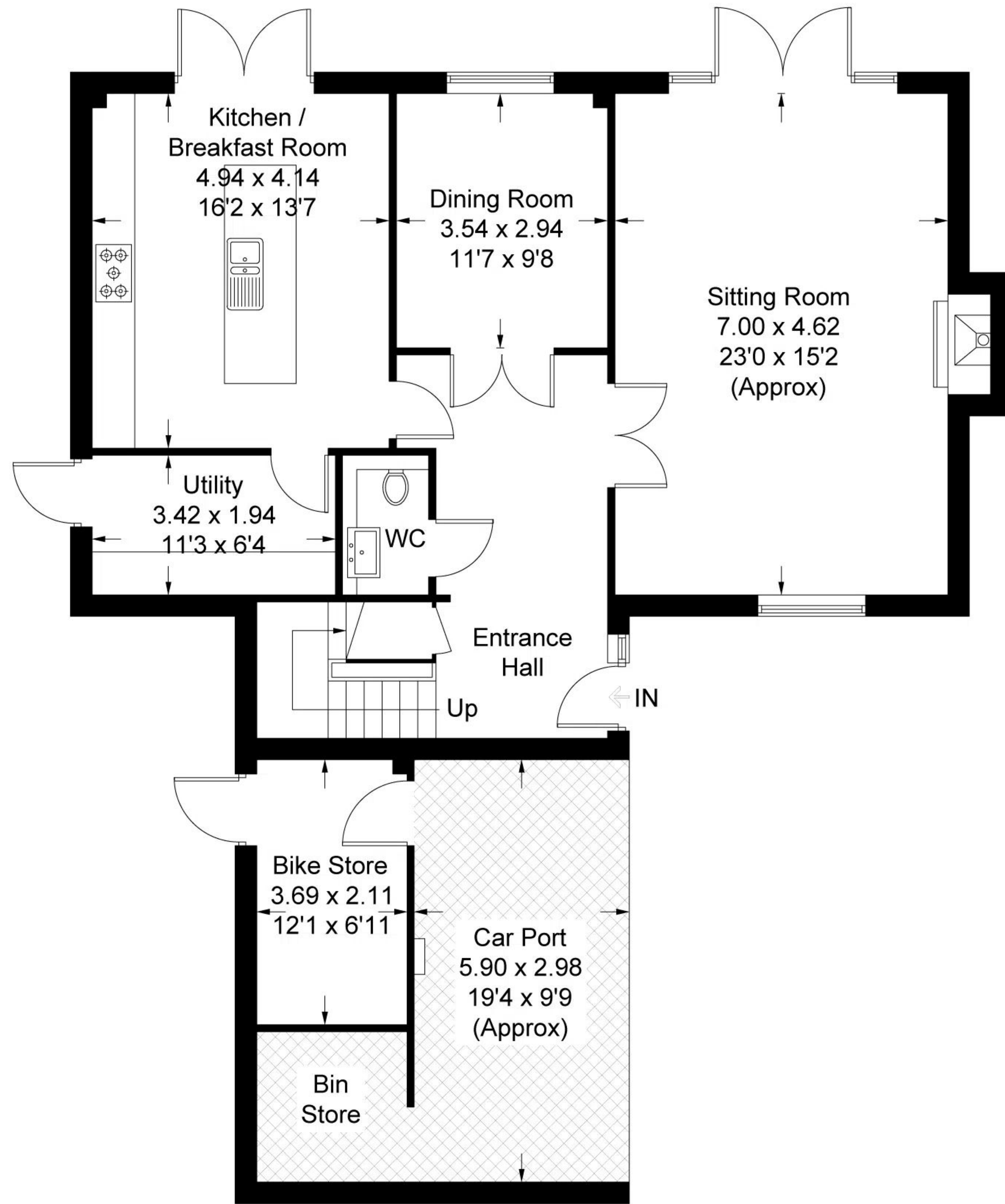
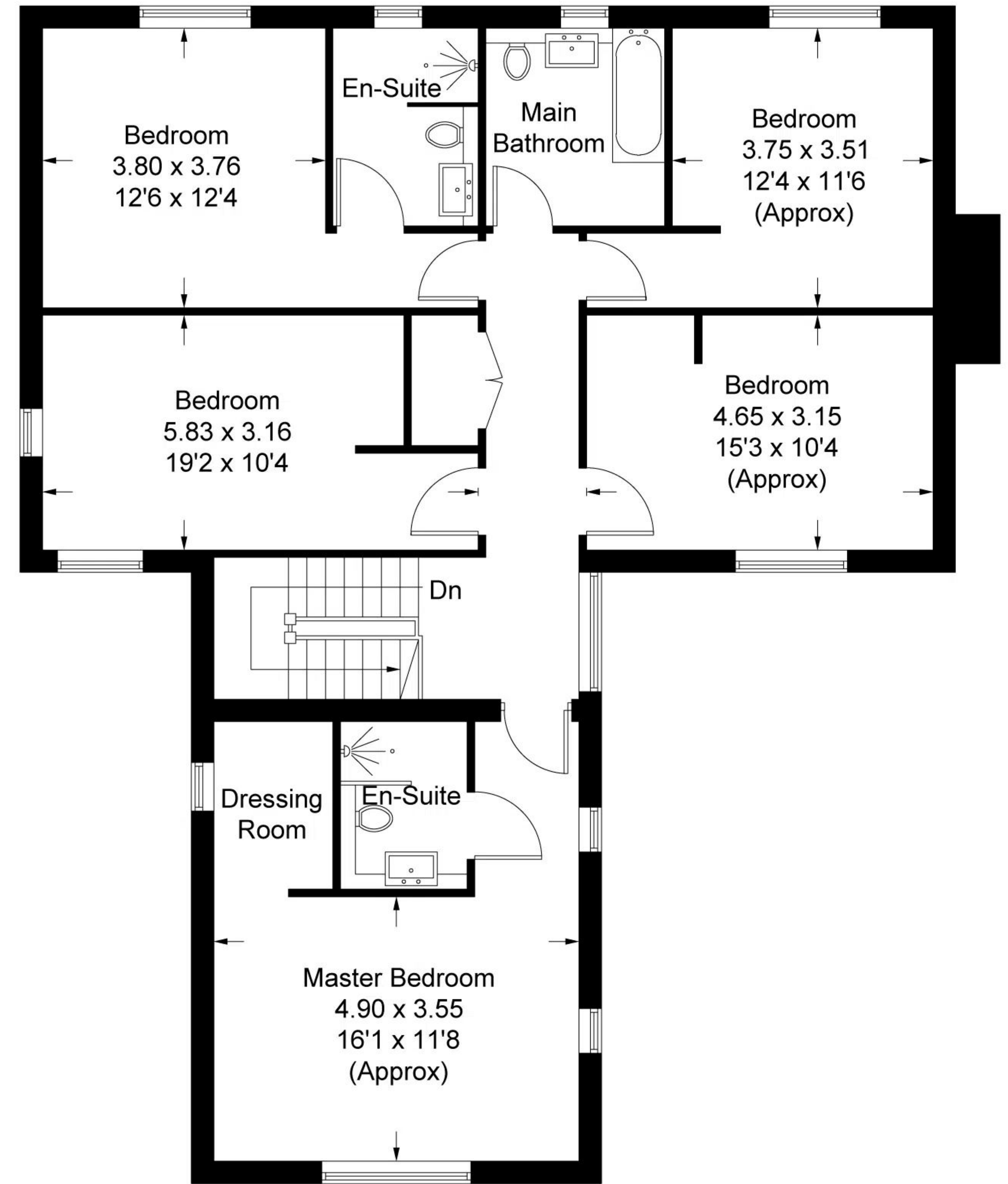


# Ashdown House, The Street, Bossingham, Canterbury



**Ground Floor - 95.3 sq m / 1026 sq ft  
(Excluding Bike Store / Bin Store / Car Port)**



**First Floor - 123.8 sq m / 1332 sq ft**

Approximate Gross Internal Area = 219.1 sq m / 2358 sq ft  
 Bin Store/Bike Store/Car Port = 30.8 sq m / 331 sq ft  
 Total = 249.9 sq m / 2689 sq ft

This plan is for layout guidance only. Not drawn to scale unless stated. Windows and door openings are approximate. Whilst every care is taken in the preparation of this plan, please check all dimensions, shapes and compass bearings before making any decisions reliant upon them. (ID876015)